

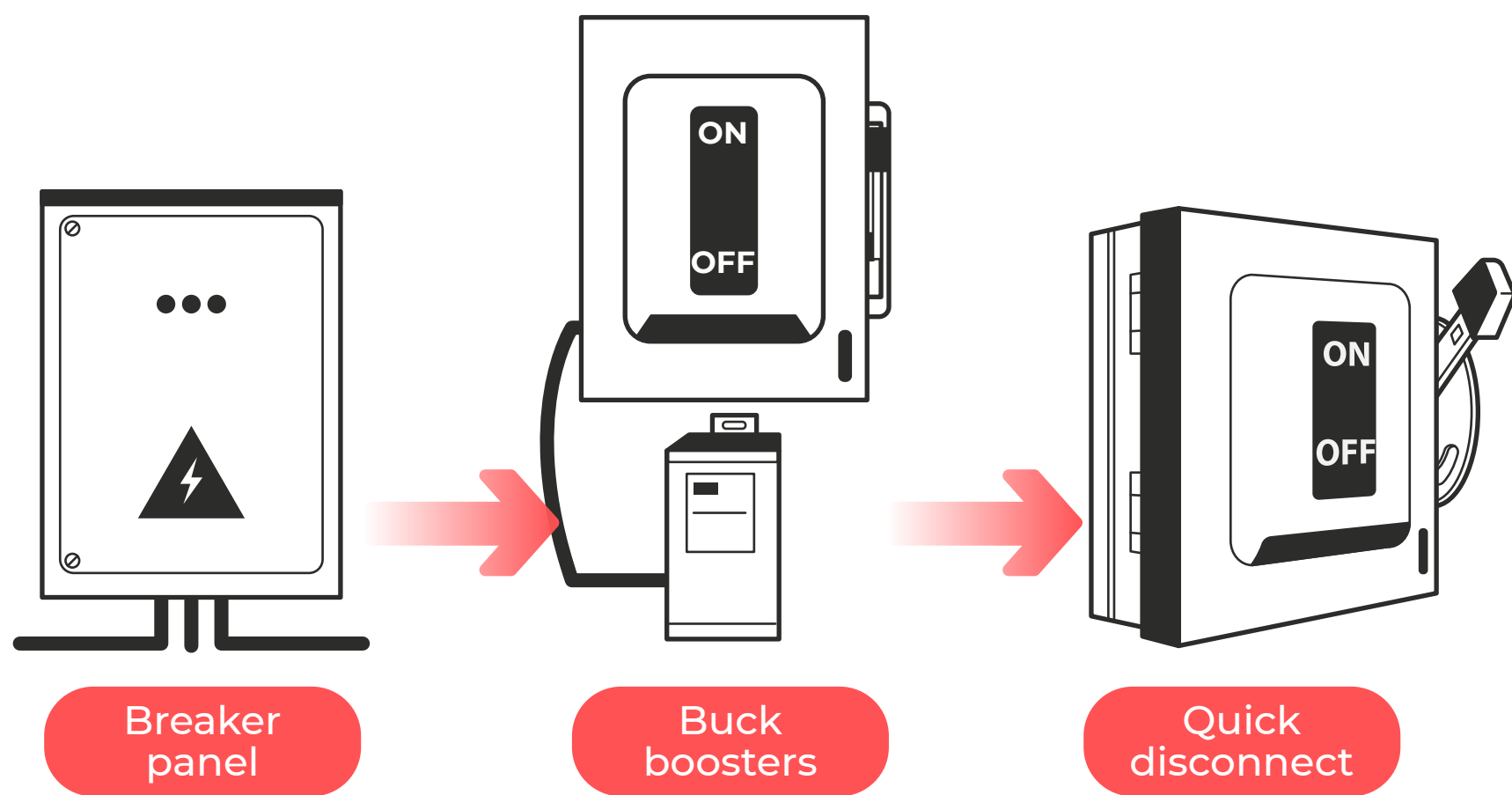
PREP YOUR BUSINESS and EQUIPMENT ROOM

Your guide to a hassle-free installation

RenuvaSkin®



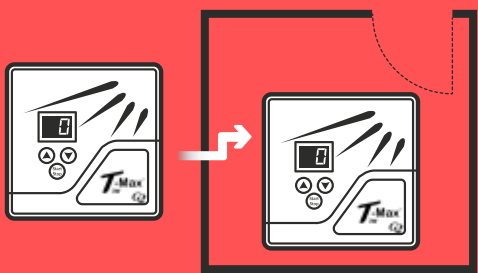
Having your *power ready* is critical for the date of installation.



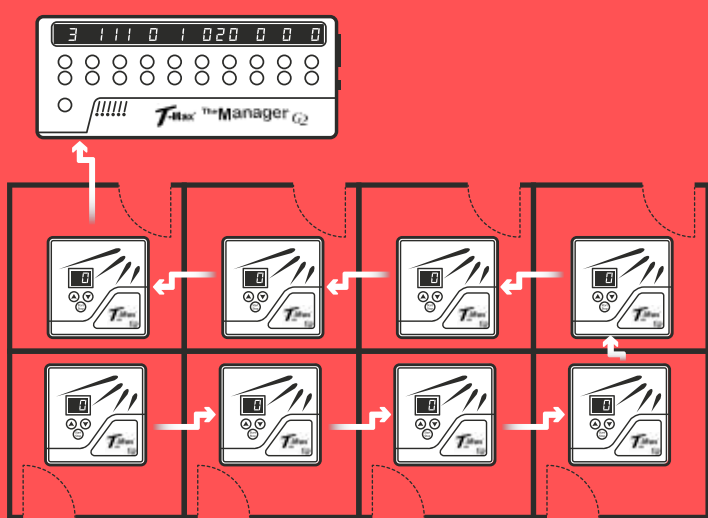
Whether you decide to place buck booster in the utility Room by the breaker panel or in the equipment room, ProSun recommends running incoming power from the breaker to the buck booster(s) and then to the quick disconnect.

Prep your T-Max system before installation!

1 Determine how many equipment rooms need to be prepped.

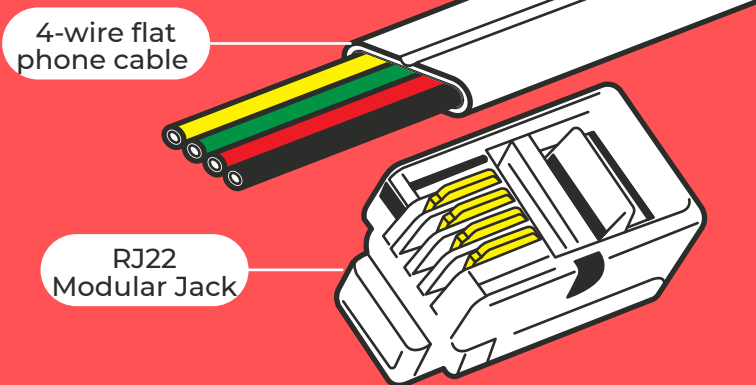


For 2 or less rooms use a front desk to room connection.

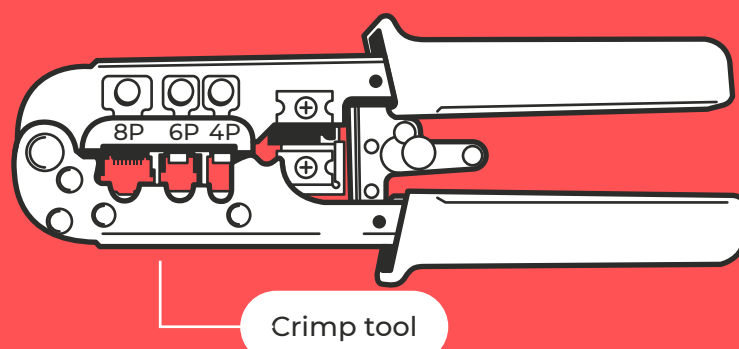


For more than 2 rooms use a daisy chain connection.

2 Purchase the proper materials.



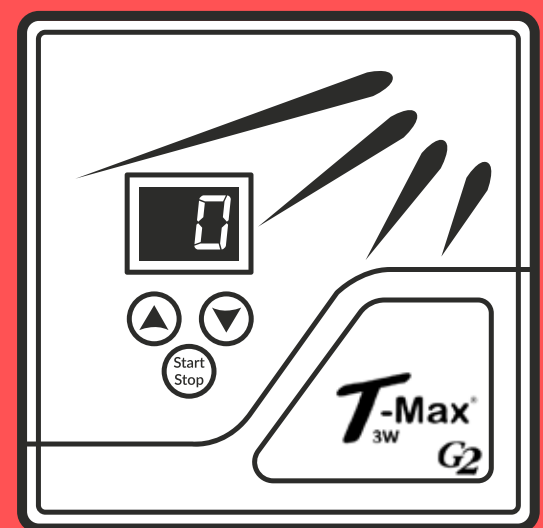
Purchase T-Max cable from ProSun or get 4-wire flat phone cable with RJ22 modular jack.



If getting your own cable get the RJ22 crimp tool. Make sure you put the ends in a straight wire pattern (where the wires line up the same on each end where the jack is crimped on).

! Bad crimp = faulty T-Max connections

3 Run the cable connections.



All T-Max cables must be ready and in place prior to installation.

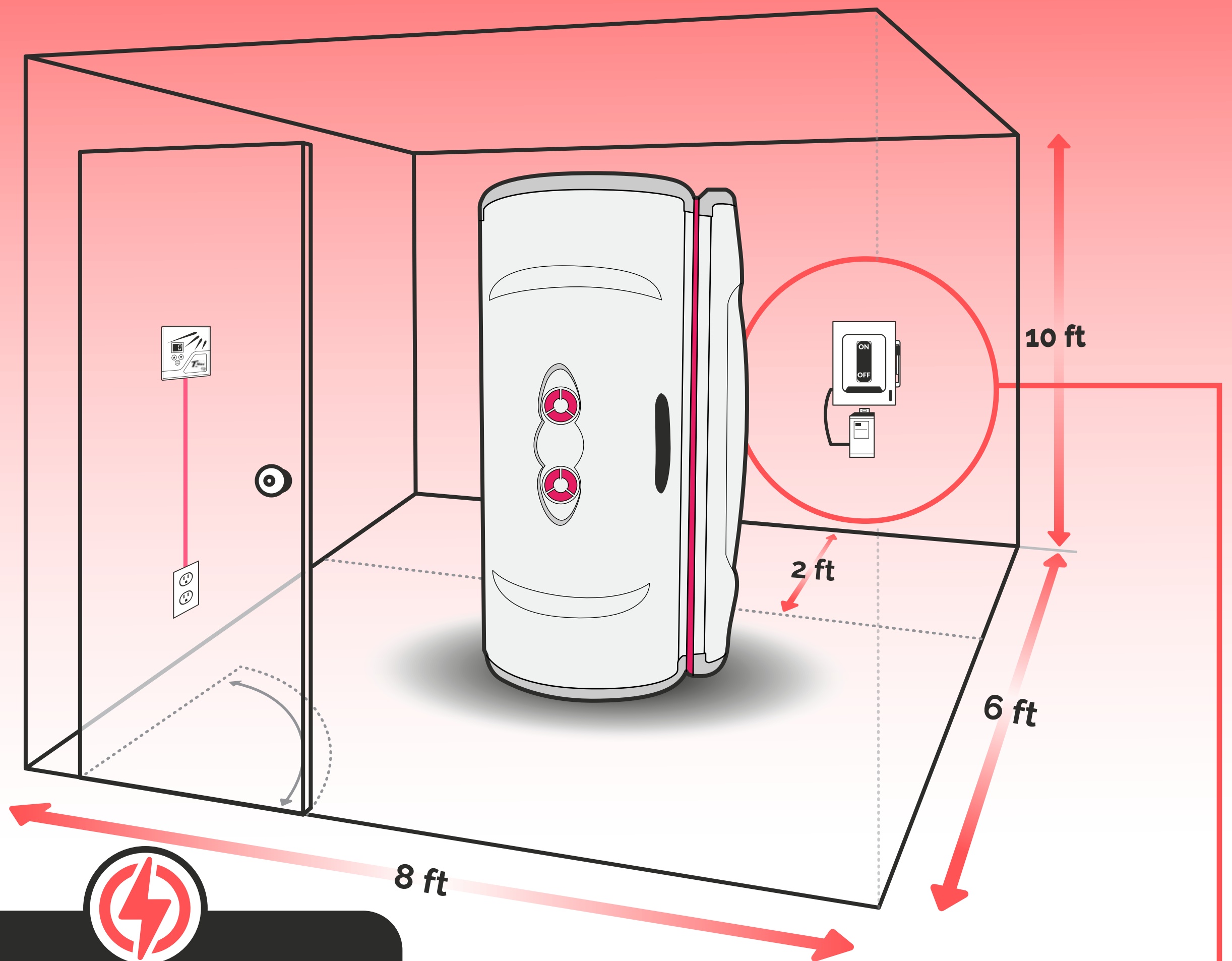
For single room : Start at front counter and run to the individual rooms, clearly labeling the room #'s.

For daisy chain : Start at front desk to room 1, room 1 to room 2, room 2 to room 3, room 3 to room 4 etc.

! Room configuration may differ based on room #'s or location. Cables should start at front counter and make a logical path to the last room in the chain.

Let's get your equipment room

READY!



Renuvaskin S420 (15 mins)

- Recommended room size: 8ft x 6ft
- Breaker size requirements: Single Phase - 25amp
- Buck booster requirements: Single Phase - 1 x 0.50 KVA
- AC requirements: BTU 6000 A/C
- 110V Outlet required for T-Max

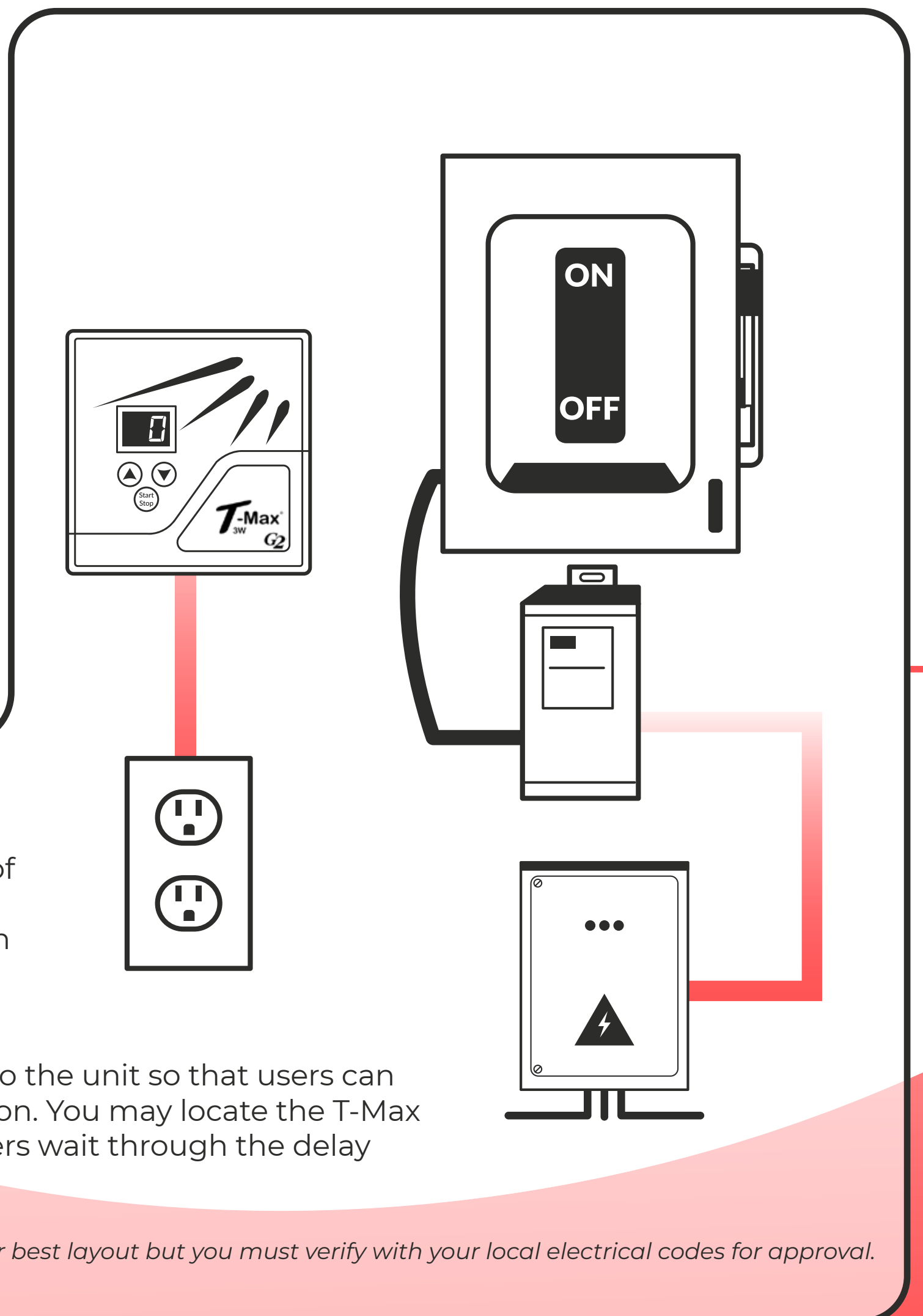
Disclaimer: This unit should be operated at 218-235v with buckboosters installed by a licensed electrician.



Quick disconnect to be located a quarter of the way in from corner on the wall with clear path available, when possible place in such a way that it is hidden from sight of door entry.

T-Max should be located on the wall next to the unit so that users can bypass the delay time and start their session. You may locate the T-Max behind the bed instead if you will have users wait through the delay time for the unit to turn on.

Disclaimer: All information provided is a suggestion for best layout but you must verify with your local electrical codes for approval.



Contact Us

440.93.7775

info@suntansupply.org