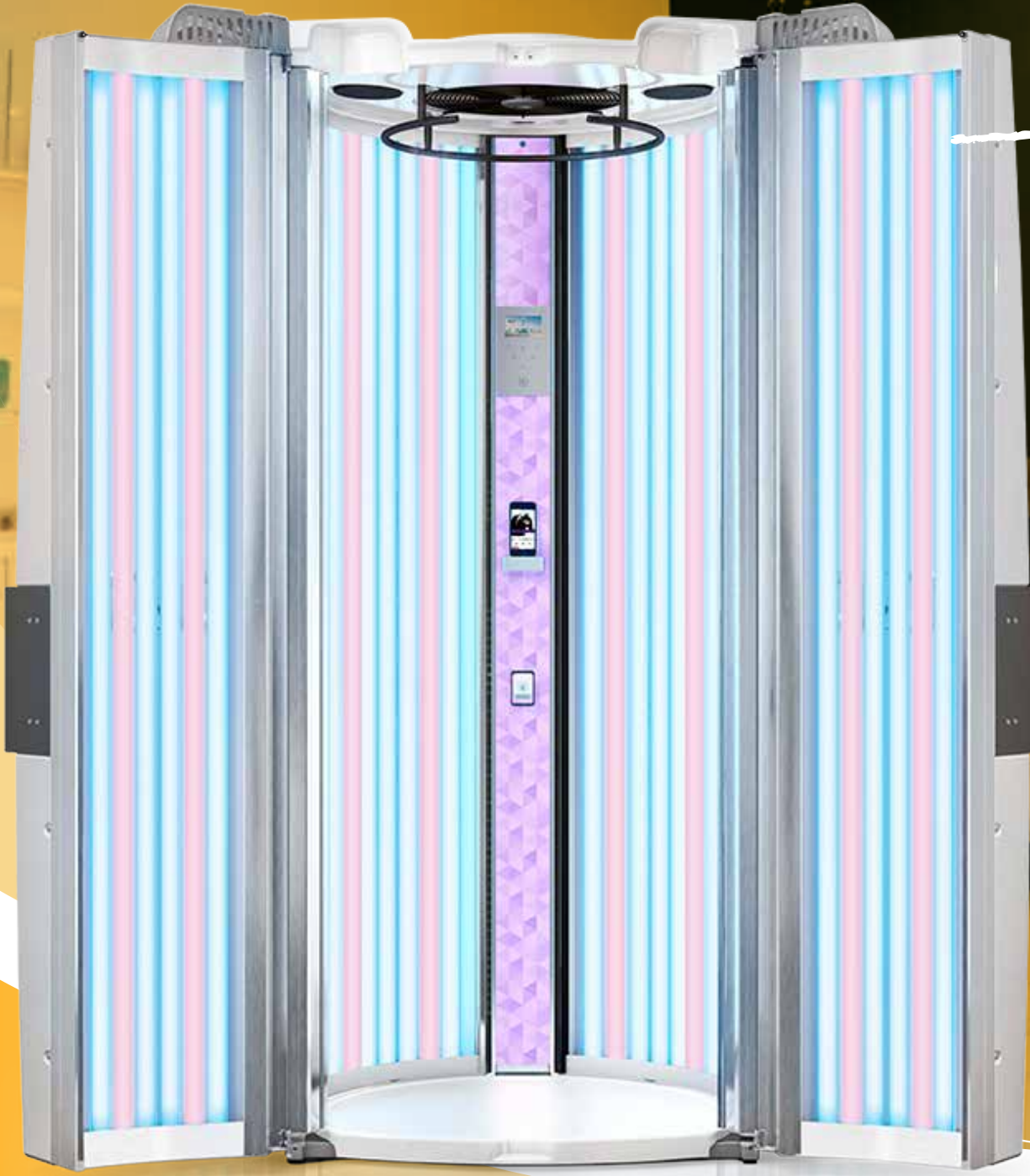


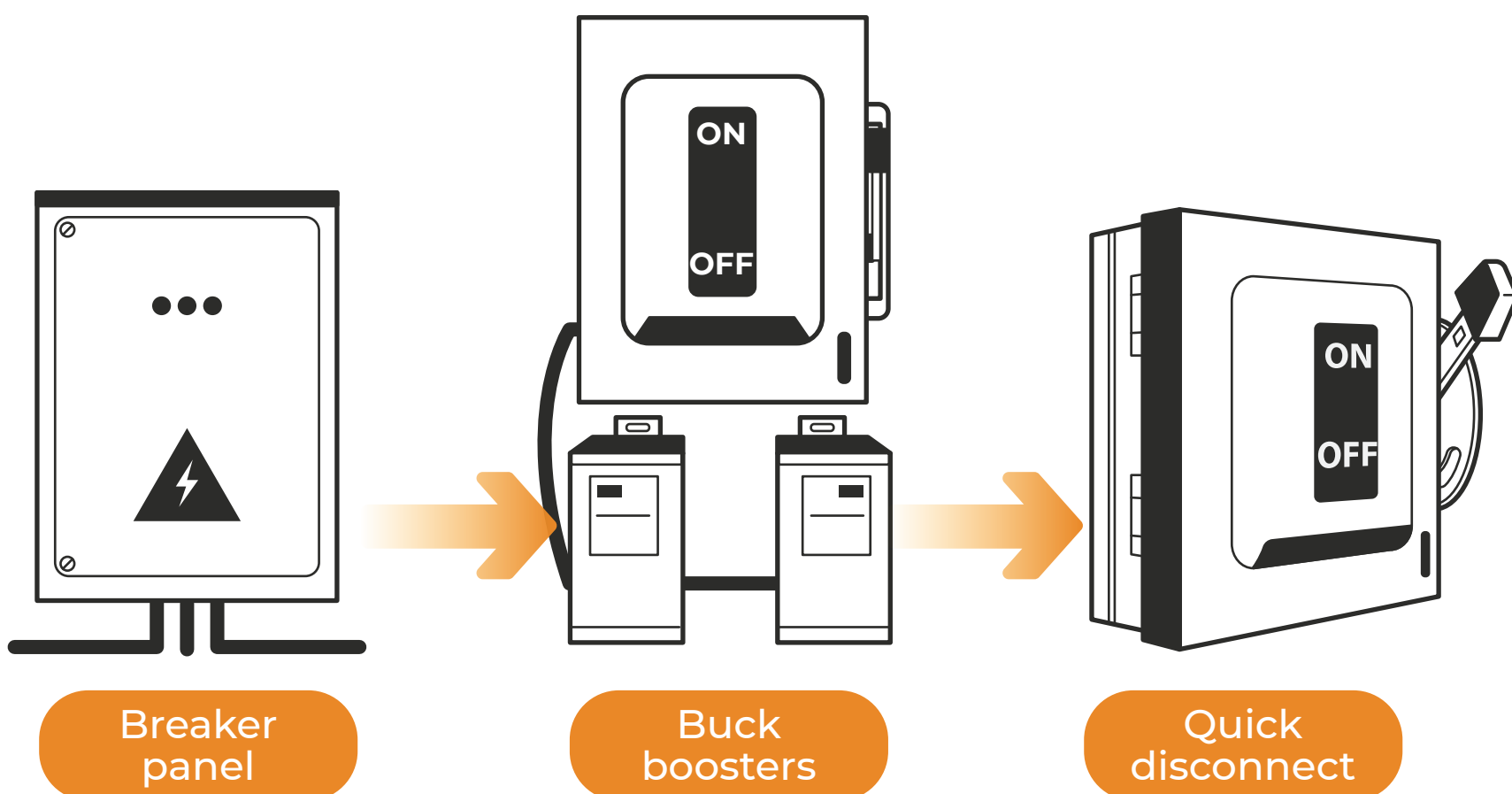
PREP YOUR BUSINESS and EQUIPMENT ROOM

Your guide to a hassle-free installation



✓
ALSO APPLIES TO UV ONLY UNIT

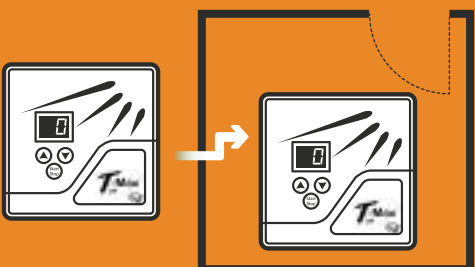
Having your *power ready* is critical for the date of installation.



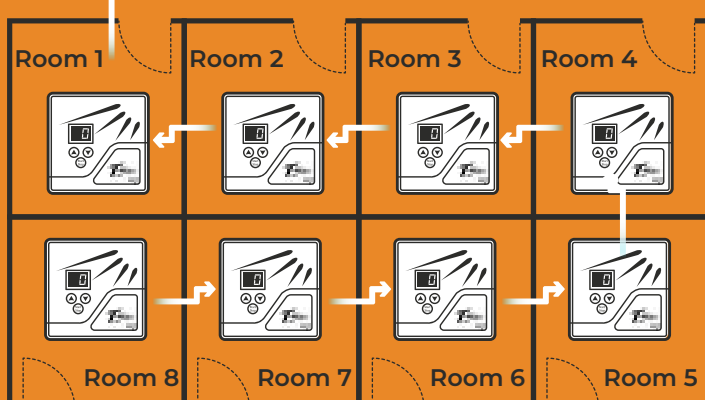
Whether you decide to place the buck booster(s) in the utility room by the breaker panel or in the equipment room, ProSun recommends running incoming power from the breaker panel to the buck booster(s) and then to the quick disconnect.

Prep your T-Max system before installation!

1 Determine how many equipment rooms need to be prepped.



For 2 or less rooms use a front desk to room connection.



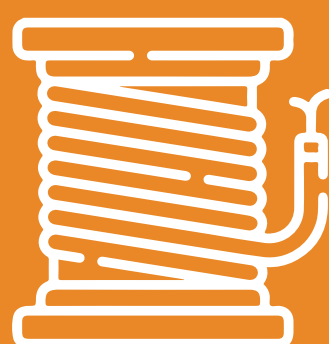
For more than 2 rooms use a daisy-chain connection.

2 Review your order

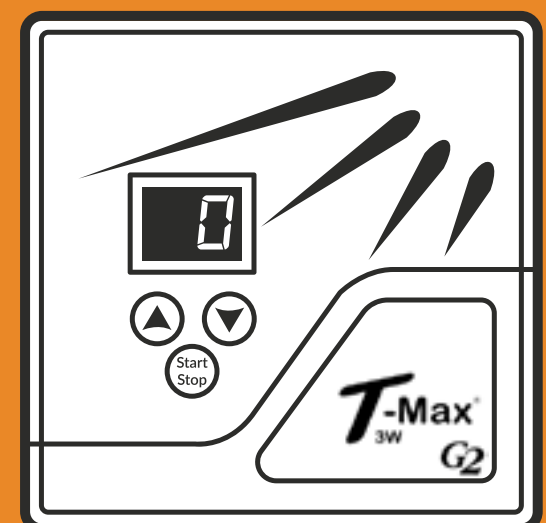
Request your T-Max to be shipped to you ahead of time so that your electrician can run the T-Max cables prior to equipment installation.



Is 50ft enough? Will you need more than 50ft of T-Max cable to run from the front desk up through the ceiling and down to the equipment in the first room? If so, let us know so that we can order a longer T-Max cable for you.



3 Run the cable connections.



All T-Max cables must be ready and in place prior to installation.

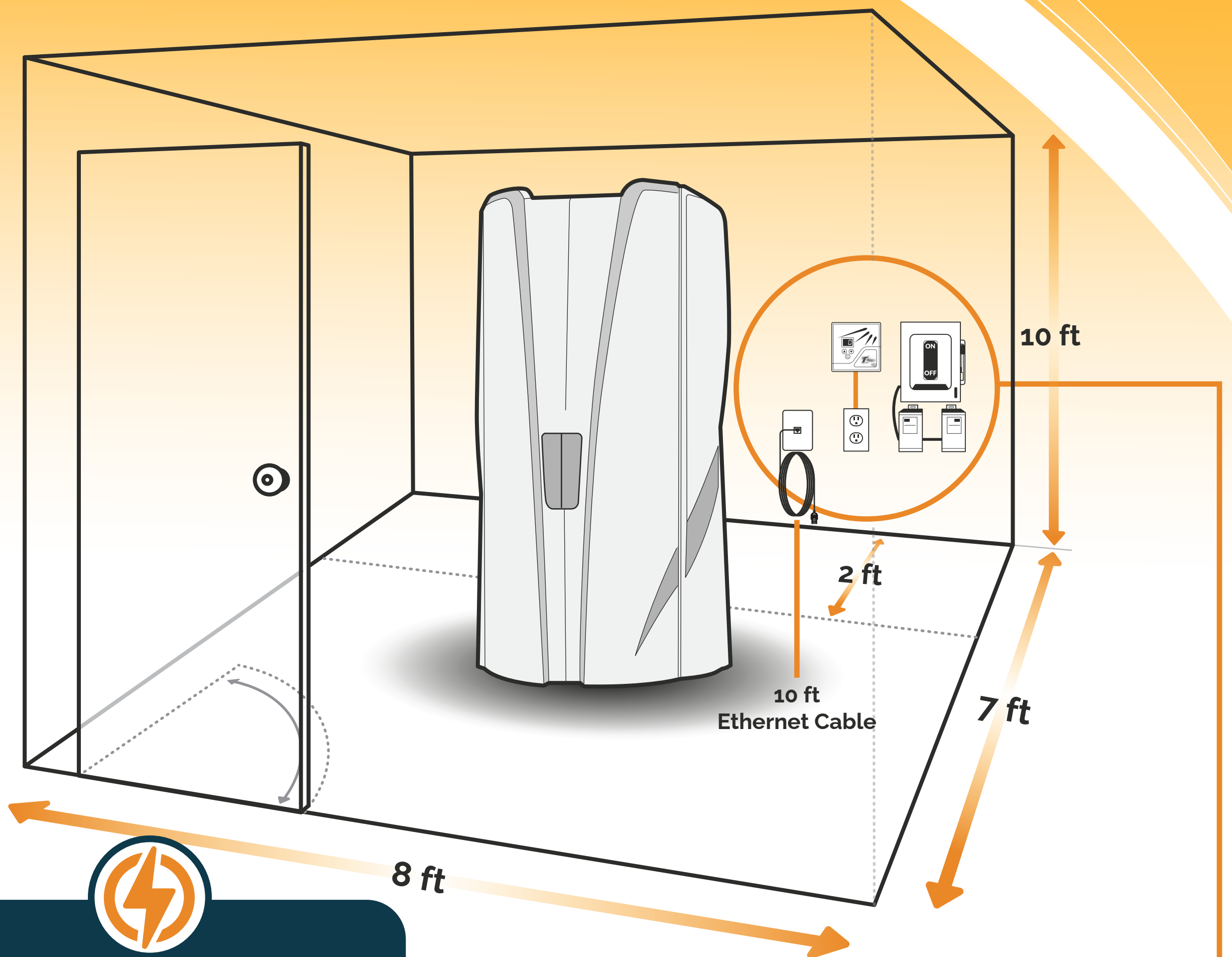
For single room: Start at front counter and run to the individual rooms, clearly labeling the room #'s.

For daisy-chain: Start at front desk. Run cable from front desk to room 1, room 1 to room 2, room 2 to room 3, etc.

! Room configuration may differ based on room #'s or location. Cables should start at front counter and make a logical path to the last room in the chain.

Let's get your equipment room

READY!



V6 (9 minutes) Models

- Recommended room size: 8ft x 7ft
- Breaker size requirements:
Three Phase – 30amp
Single Phase - 50amp
- Buck booster requirements:
Three Phase - 2 x 0.75 KVA
Single Phase - 1 x 1.5 KVA
- AC requirements:
BTU 12000 A/C
- 110V Outlet required for T-Max
- Ethernet Connection Requirements:
10ft cable inside the room

Disclaimer: This unit should be operated at 218-235v with buckboosters installed by a licensed electrician.

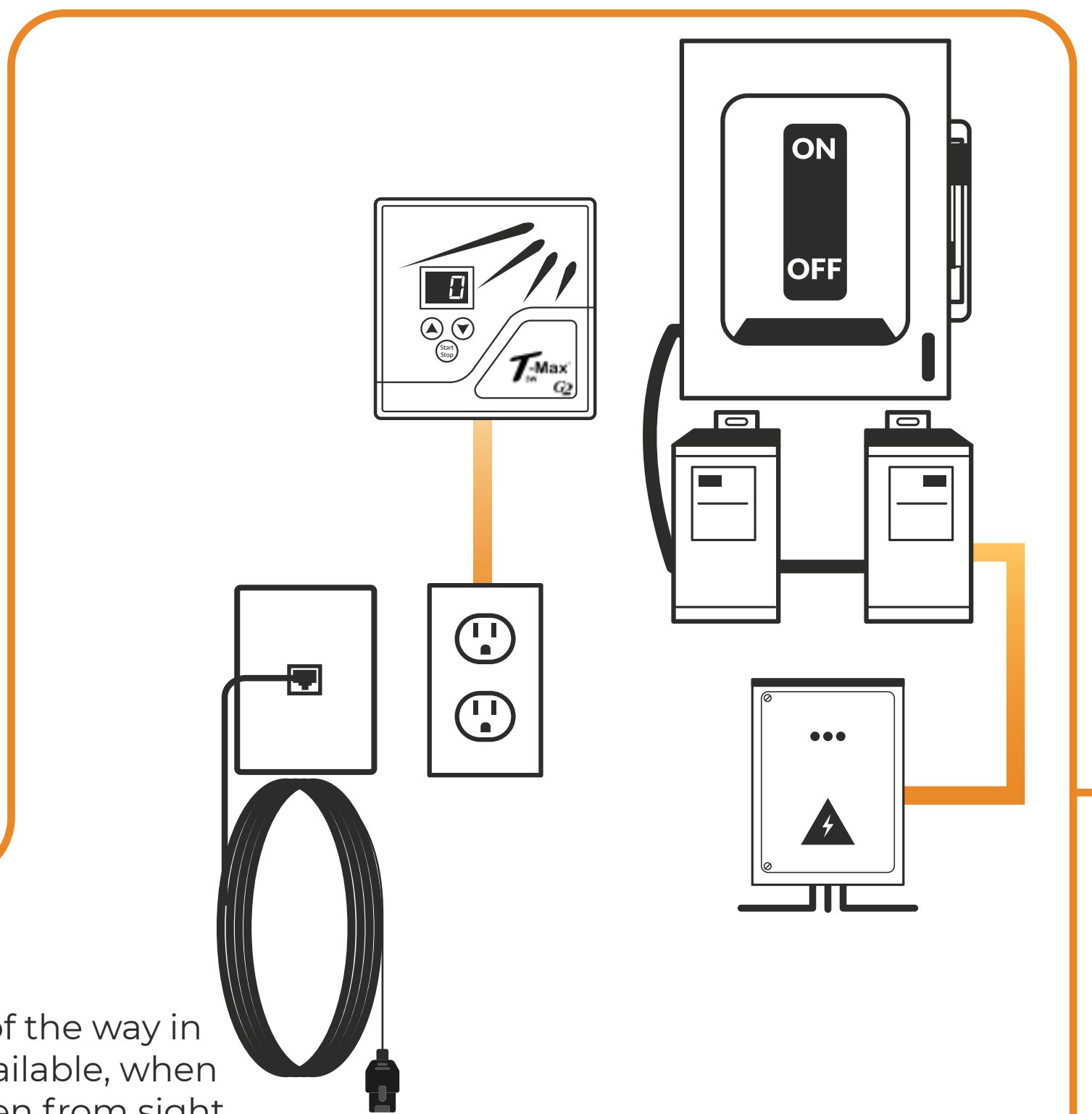


Quick disconnect to be located a quarter of the way in from corner on the wall with clear path available, when possible place in such a way that it is hidden from sight of door entry.

T-Max can be located behind unit as the quickstart will have users operating bed from the display in the bed.

Ethernet connection should go direct from your internet source to the room. Inside the room leave 10ft available to connect to the MyLuxura Module.

Disclaimer: All information provided is a suggestion for best layout but you must verify with your local electrical codes for approval.



Contact Us

☎ 440.937.7775

✉ info@suntansupply.org